

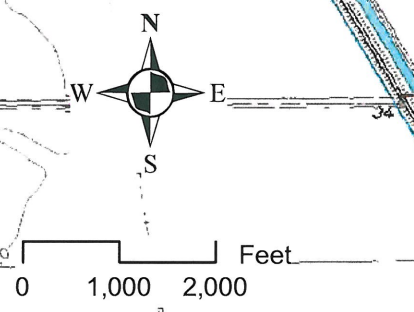
PROPOSED ADDITIONAL POINT OF DIVERSION

N 2,008,200 feet
E 6,667,300 feet

Within the NE $\frac{1}{4}$ of the NW $\frac{1}{4}$ of Section 34, T.10N, R.3E, M.D.B.&M. (Based on projected section lines from official USGS Quadrangles)

PROPOSED ADDITIONAL POINT OF DIVERSION IS REFERENCED TO CALIFORNIA STATE PLANE COORDINATE SYSTEM, ZONE 2, NAD 83 HORIZONTAL DATUM, FEET.

Sources:
Projected section lines based on official USGS quadrangles. Background Imagery: USGS Quadrangles (Gray's Bend, Taylor Monument) 1:24,000.
Proposed Additional Point of Diversion: Map to Accompany Applications 30358A & 30358B, dated November 2010.



Certificate

I, Darren Cordova, 1771 Tribute Road, Suite A, Sacramento, California, hereby certify that this map was prepared under my supervision on May 6, 2011, from information which I believe to be accurate; and that it correctly represents the proposed additional point of diversion described in the accompanying petition for change.



Darren B. Cordova
Engineer
May 6, 2011
Certificate No. C-067808
Expires 06/30/2011



CONAWAY PRESERVATION GROUP
MAP TO ACCOMPANY PETITION FOR CHANGE TO LICENSE 904 (APPLICATION 1199)
AND APPLICABLE TO PROPOSED LICENSE 904B (APPLICATION 1199B)